

Call for Selection for PhD Candidates Support Project

Graduate School of Medicine, Science and Technology, Shinshu University Next Generation Advanced Human Resources/Regional Innovators Development Program (JST Support for Pioneering Research Initiated by the Next Generation (SPRING) program)

Application Guidelines for October 2024 / April 2025 / April 2026

| [Important] | | |
|---|--------------------|--|
| This recruitment guideline is intended for selecting program students under the following admission categories. | | |
| Recruitment for the fiscal year 2024 is limited to this occasion only. Those especially wishing to receive program support under admission categories (1) and (2), please apply this time. | | |
| Recruitment Category | Number of Recruits | Target Applicants * |
| (1)Support starts in October 2024 | 3 | Ph.D. student enrolled as of October 2024 |
| (2)Support starts in April 2025 | 12 | Ph.D. student enrolled as of April 2025 |
| (3)Reserve admission for first-year master's students at Shinshu University (Support starts in April 2026) | a few students | A person enrolled in the first year of the master's program at SHINSHU University, planning to enter the doctoral program in April 2026. |
| *Please make sure to check the details of the eligibility requirements before applying. | | |
| Additionally, it allows concurrent application with the following doctoral student support program at our university: JST BOOST: Broadening Opportunities for Outstanding young researchers and doctoral students in Strategic areas SHINSHU University "Sustainable Society AI Project" Please also review the recruitment guidelines for the BOOST Program. Please refer to the separate document regarding concurrent applications. | | |

Shinshu University starts providing salary-style support consisting of a stipend to defray living expenses along with research funding to talented students enrolled in doctoral programs under Support for Pioneering Research Initiated by the Next Generation (SPRING) program of JST (<https://www.jst.go.jp/jisedai/en/outline/index.html>).

An overview of the project follows. These guidelines summarize the requirements for selection of this project.

Program Objectives

- To help doctoral program students pursue free, challenging, and cross-discipline research that goes beyond traditional boundaries
- To provide an environment in which students can focus on research by providing research incentives
- To prepare talented doctoral program students so they can flourish through a diverse array of career paths

Shinshu University initiative

Next Generation Advanced Human Resources/Regional Innovators Development Program

Program career and personal development content

Doctoral students establish the "Shinshu Tamon Juku" as a platform to refine their aspirations towards societal and academic transformations through research activities. Fueled by creative interdisciplinary

exchanges, they engage with outstanding overseas researchers and pioneer entrepreneurs, fostering individuals with high academic expertise who can boldly tackle challenges and take action to solve them.

Program Website: <http://www.shinshu-u.ac.jp/graduate/spring/>

1. Eligibility

Applicants must have been enrolled in the Shinshu University Graduate School of Medicine, Science and Technology, and recognized as outstanding students.

However, the following individuals are not eligible, regardless of whether they meet the above requirements:

| Ineligible individuals |
|---|
| <ol style="list-style-type: none"> 1. Students who have been selected as a special fellow (DC) by the Japan Society for the Promotion of Science (JSPS) 2. International students who are being supported by a Japanese government (Monbukagakusho: MEXT) scholarship (Including "JICA") 3. International students who are receiving scholarship or other support from their home country 4. Students with a stable income in the form of salary or director remuneration from a company or other organization that provides sufficient funds to cover their living expenses (amount of ¥2.4 million or more per year) 5. Recipients of other scholarships (including those who are in the process of applying) who are not allowed to receive the scholarship together with this project. However, this does not include the application to JSPS DC. 6. Students who are on a leave of absence 7. Students who are planning to withdraw before completing their doctoral program 8. Students who have been enrolled for longer than the standard term of study |

*After applying for or being accepted into this project, if any of the following conditions apply during enrollment, you will lose eligibility.

2. Application Requirements

The person eligible for support shall meet all of the following criteria

- Individuals who possess a willingness to contribute to the science, technology, and innovation of our country, and who have the motivation to engage in challenge-driven research with high academic expertise and intellectual curiosity for problem-solving.
 - Students who conduct research on future issues and potential challenges [Future Technology Science (FTS) type], or students who conduct research based on their intellectual curiosity [Curiosity-Driven Science (CDS) type].
 - Those who have a sufficient understanding of the purpose of this project and the responsibilities imposed on the participants, and who are willing to cooperate in activities related to this project.
 - Individuals who actively participate in the "Shinshu Tamon Juku" project.
 - Those who intend to apply for the Japan Society for the Promotion of Science Special Researcher (DC2) program after the second year of their doctoral program.
 - In the case of international students, those who have a willingness to contribute to the science, technology, and innovation of Japan.
- ※ Regarding international students, as part of the JST project's objectives, it is required to promote acceptance from a wider range of countries and regions, particularly from ASEAN countries, in order to create an environment for learning and understanding values based on diverse cultural backgrounds. The selection process will include the above criteria as evaluation points.

3. Number of Places

| Recruitment Category | Number of Recruits | Target Applicants |
|------------------------------------|--------------------|---|
| (1) Support starts in October 2024 | 3 | Ph.D. student enrolled in this graduate school as of October 2024 (e.g. Those who plan to enroll in the graduate |

| | | |
|--|----------------|--|
| | | school in October 2024. Those who are enrolled in this graduate school at the time of application.) |
| (2)Support starts in April 2025 | 12 | Ph.D. student enrolled in this graduate school as of April 2025 (e.g. Second-year master's students at the time of application who plan to enroll in the graduate school in April 2025. Those who are enrolled in this graduate school at the time of application.) |
| (3)Reserve admission for first-year master's students at Shinshu University (Support starts in April 2026) | a few students | A person enrolled in the first year of the master's program at SHINSHU University, planning to enter the doctoral program in April 2026. The following individuals are eligible: First-year master's students at Shinshu University who intend to advance to the doctoral program and are committed to doing so at the time of application. Only those who can guarantee their advancement to the doctoral program are eligible. *Additionally, it is necessary to take and pass the doctoral entrance examination separately. Those who are not enrolled at the time the support begins will not be eligible. |

■Reference: Relationship between the Number of Recruits and the Selection Based on the Support Start Period

| Support Start Period | October 2024 | April 2025 | October 2025 | April 2026 |
|----------------------|---|---|----------------------------|---|
| Number of Recruits | 3 | 12 | 4 | Total 9 |
| Selection Process | This Selection Process "Recruitment Category (1)" | This Selection Process "Recruitment Category (2)" | (No recruitment this time) | This Selection Process "Recruitment Category (3)" (M1 Students) |
| | | | 2025 Selection Process | 2025 Selection Process |

*The number of recruits is tentative and may change.

4. Research Incentives

Total annual amount: ¥2.7 million (stipend of ¥2.4 million and research funding of ¥300,000),
50% tuition fee waiver

5. Funding Period

Within the standard period of study.

If the period of enrollment exceeds the standard length of study, any subsequent period will not be eligible for support.

However, the funding period may be canceled, extended, or otherwise adjusted based on students' individual circumstances, including life events such as childbirth and responsibilities such as parenting and nursing care.

Additionally, the funding period may be shortened if certain conditions under which funding may be canceled

or terminated are satisfied.

※The amount of support for research encouragement stipend, etc. may change depending on the status of budgetary measures from JST or government.

6. Application Documents

Prepare the prescribed slides and videos explaining your research and submit them after obtaining approval from your faculty advisor. Please prepare documents in Japanese or English.

(*Selection will be canceled if a student is found to have included false information on his or her application documents.)

(1) Future Technology & Science-style (FTS)

Your research proposal should provide a description of social problems or issues that could occur in the future. It should also explain how the research topic you're pursuing in your doctoral program will provide a resolution process for those issues.

Moreover, you should also provide a specific description of the goals and objectives you have established, the means and methods you will use to achieve them, and the difficulties you anticipate facing.

Additionally, you should describe how your research findings will contribute to human society 30 years or 50 years in the future, from a long-term perspective.

(2) Curiosity-Driven Science-style (CDS)

Your research proposal should describe the motivation for the research that you will try in your doctoral program based on your intellectual curiosity, as well as the background and perspective that characterized that process.

You should also provide a specific description of the goals and objectives you have established, the means and methods you will use to achieve them, and the difficulties you anticipate facing.

Additionally, you should describe how your research findings will develop the basic science over the next 30 or 50 years, from a long-term perspective.

7. Submission Information

Applicants must submit the following 2 files, prepared entirely by themselves.

Your score will be deducted if the documents are incomplete.

(1) Application document (Specified format. One-page slide document describing your research.

PDF file format. Within 10MB)

[Common to SPRING and BOOST]

Formats can be obtained from (.pptx file is downloaded):

https://www.shinshu-u.ac.jp/graduate/sogoiriko/slide_ID_name.pptx

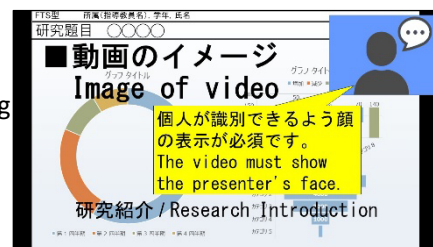
Slides should be concise and easy to understand with figures and tables.

(2) 2 minutes-video presentation file. (MP4 file format. Within 100MB)

[Common to SPRING and BOOST]

Please create video files using tools such as PowerPoint or Zoom's recording feature.

*The video must show the presenter's face so that he/she can be identified.



File-name:

1) One-page slide document file: slide_Student(examinee's) ID_your name. pdf

2) Two- minutes video presentation file: movie_Student(examinee's) ID_your name. mp4

Two files must be submitted via the application form below.

If you are applying for both SPRING and BOOST, you can also use this form.

<https://forms.gle/9ujpx8Kh74FNK2T16>

*If you are unable to submit documents via this form, please contact us via email at shin-jisedai@shinshu-u.ac.jp
(Graduate School Office, Division of Student Affairs)

*If you are applying to both BOOST and SPRING, please make sure to review and submit the application Guidelines for BOOST as well. In the case of applying to both SPRING and BOOST, the slides and video will be evaluated together. Different slides and videos cannot be submitted for SPRING and BOOST. At BOOST, in addition to slides and videos, submission of documents explaining AI is required.

8. Submission Period

Thursday, July 25, 12:00 p.m. - Thursday, August 1, 12:00 p.m. (Japan time)

9. Screening Method

(1) Document screening (primary screening)

Application documents submitted by applicants will be screened.

(2) Interview screening (secondary screening)

Applicants who pass the document screening will move on to an interview screening (online).

The interview screening will be conducted on **Thursday, August 29**, at 5:00 p.m. (Japan time).

Details will be provided to eligible applicants as they become available.

We cannot accommodate changes in interview times, so please secure your schedule.

10. Selection

Applicants will be notified if they were selected by email in September.

If any candidates withdraw, we may offer admission to the next qualified applicants.

11. Obligations of Selected Students

(1) Requirements

- Program students must take an e-learning course on research ethics through the APRIN e-learning program (eAPRIN).
- Program students must submit an activity report on a regular basis.
- Program students must participate in program events, such as "Shinshu Tamon Juku".
- Program students must consent to the sharing by SHINSHU University of their email address with JST.
- Program students must apply for a JSPS Research Fellowship (DC2).
- Registration for the "Job-type Research Internship (Coop-J internships)" program.
- Registration with the Japan Graduates Database (JGRAD). Cooperation in surveys regarding post-graduation career paths and research achievements.
- Proper execution of research funds in accordance with the rules.
- Cooperation in promotional activities within the scope that does not pose any hindrance.
- Submit a pledge form.

(2) Recommendations

Program students will be expected to take the initiative to actively pursue career development opportunities, for example by participating in the following initiatives:

- Applying to the open call program within the project.
- Participation in a long-term internship at a company or other entity or in work as a research staff member at a company or other entity
- Participation in exchanges hosted by JST for doctoral students from various universities
- Active participation in other activities as instructed by the program's leadership

12. Cancellation/cessation of support

(1) If the student fails to satisfy the requirements set forth in "1. Eligibility", your program support will be

terminated.

(2) In the event it determines any of the following has occurred, the program's supervision will either provide guidance so that the student can improve his or her conduct or, if it determines that such improvement will not be forthcoming, cancel the student's selection for participation in the program. And then, you might have to refund your money which we paid such as research financial incentive.

- If the above-mentioned mandatory requirement under 11.(1) is not fulfilled, or if there is an apparent lack of enthusiasm toward the recommended action under 11.(2) in this program
- If the student fails without a legitimate reason to implement the research plan he or she submitted at the time of application for research incentives
- If the student is subjected to disciplinary action as stipulated in the Shinshu University Graduate School Regulations.

(3) In the event a student is found to have conducted fraudulent research or included false information on his or her application, his or her selection will be canceled, and he or she will be required to repay research incentives already received.

*You must be in Japan to receive aid.

13. Other

1. JST requires that universities conduct a survey to track selected students' careers for at least 10 years after graduation. Successful applicants are required to cooperate with this tracking survey and report associated information to the University. Be sure to register with the Japan Graduates Database (JGRAD).
2. The names and other information of students selected to receive research incentives will be published on the University's website and in other materials.
3. Since the stipend portion of the research incentive is considered miscellaneous income, successful applicants will need to pay tax on those funds by filing their income taxes the year after they are received. Applicants who are listed as a dependent of a taxpayer (for example, a parent) should inform that person that they will be receiving a stipend that is treated as miscellaneous income and seek instructions from the person responsible for tax issues at that person's employer.
4. Program students who newly become JASSO Type 1 Scholarship recipients from FY2023 are not eligible for the "Return Exemption System for Particularly Meritorious Achievements" in the doctoral program.
5. This recruitment is not for the doctoral program entrance examination at Shinshu University. To enroll in our doctoral program, you must pass a separate entrance examination conducted by the graduate school.

Reference

1. Under Japan's Income Tax Act, if a dependent of a family member such as a parent earns more than ¥380,000 after necessary expenses are subtracted from stipend payments received from January through December, that family member may not be able to claim the student as a dependent, and the student will be subject to income tax. In addition, the dependent will have to pay resident tax the following tax year based on his or her income during the year in question.
2. For the purpose of health insurance and mutual-association insurance, students who expect to receive stipend payments of greater than ¥1.3 million during the year may not be classified as dependents. Since the amount of the stipend is determined at the outset, students who do not meet the requirements for being classified as a dependent are responsible for registering for National Health Insurance (Kokumin Kenko Hoken).
3. Although the manner, in which household income is calculated for students who are exempt from tuition payments depends on their particular circumstances, successful applicants may not qualify for a tuition exemption as a result of their income.

¹ Regional Innovators: Those who can boldly tackle challenge-driven research with high academic expertise and intellectual curiosity.

²Shinshu Tamon Juku: The program will establish the Shinshu Tamon Juku, which will help students refine their

commitment to social and academic reform and put into practice the mission they have discovered for themselves while focusing on research activities that deepen academic specialization. Drawing on energy derived from creative exchanges between students from different fields, the School will involve talented researchers and entrepreneurs in an effort to convert new value for the society of the future and plan its realization. The School will pursue a Regional Implementation Project through which students will refine their dedication to value realization in an effort to create and implement problem-solving research that brings together different fields. The School will also offer intensive English education in order to foster an outlook that makes use of differences along with academic ability through international activities.

The initiative was established in the fiscal year 2021. Starting from the fiscal year 2024, we will implement initiatives that have evolved into the "Next Generation Advanced Human Resources/Regional Innovators Development Program" as the "Second Shinshu Tamon Juku".

■Contact: Shinshu University Program Office
shin-jisedai@shinshu-u.ac.jp

Application for JST Doctoral Student Support Programs SPRING and BOOST

Shinshu University has been selected for two doctoral student support projects: SPRING and BOOST.

- JST SPRING: Support for Pioneering Research Initiated by the Next Generation (SPRING) program- SHINSHU University "Next Generation Advanced Human Resources/Regional Innovators Development Program"
- JST BOOST: Broadening Opportunities for Outstanding young researchers and doctoral students in STrategic areas SHINSHU University "Sustainable Society AI Project"

Both SPRING and BOOST are support programs for doctoral students, so recruitment and selection will be conducted integrally. Depending on your research field and academic year, the selection criteria you can apply for may vary. Additionally, applicants may apply to both SPRING and BOOST simultaneously.

Please review the respective recruitment guidelines and submit your application accordingly.

■Summary of the Differences between SPRING and BOOST

(Please refer to the recruitment guidelines for details).

| item | SPRING | BOOST |
|---------------------|---|--|
| Your research field | Without conditions | The research field is in next-generation AI, AI-related, and AI-integrated areas. |
| Research Incentives | Total annual amount: ¥2.7 million (stipend of ¥2.4 million and research funding of ¥300,000) 50% tuition fee waiver | Total annual amount: ¥3.9 million (stipend of ¥3 million and research funding of ¥900,000) 50% tuition fee waiver |
| Career support | A wide range of career development and training content centered around Shinshu Tamon Juku is implemented | Training programs related to AI research are conducted. |
| Project Purpose | To broadly nurture doctoral talents who can contribute to Japan's science, technology, and innovation across diverse careers. | To cultivate talents who will become leading scientists in the next-generation AI field, a strategic area of focus for our nation. |

■Types of Positions You Can Apply For

You can apply for recruitment categories where both Condition 1 and Condition 2 in the table below are marked with a checkmark (o).

| Condition / Recruitment Category | | | SPRING | | | BOOST |
|--|---------------------|---|---|---|---|--|
| | | | Category(1) Support starts in October 2024 | Category(2) Support starts in April 2025 | Category(3) Support starts in April 2026 (Reserve admission for M1 students at Shinshu Univ.) | Support starts in April 2025 |
| Condition 1 | Your research field | Related to AI | ○ | ○ | ○ | ○ |
| | | Not related to AI | ○ | ○ | ○ | × |
| You can apply to recruitment categories marked with a circle in both Condition 1 "Your research field" ↑ and Condition 2 "Current grade" ↓ | | | | | | |
| Condition 2 | Current grade | First year of master's student | × | × | ○ (Shinshu Univ.) | × |
| | | Second-year master's student scheduled to graduate in | ○ | ○ | × | × |
| | | | | | | *If you enter in April, it's acceptable. |

| | | | | | | |
|--|--|---|---|---|---|---|
| | | September. | | | | |
| | | Second-year master's student scheduled to graduate in March. | × | ○ | × | ○ |
| | | Current doctoral students *In the standard period of enrollment. | ○ | ○ | × | × |

*We plan to establish a system where individuals who have been accepted for SPRING reservations in their first year of the master's program can apply for BOOST selection during their second year of the master's program.